



PRINCE GEORGE'S  
COMMUNITY COLLEGE

*Transforming lives.*

# SAGE

Seasoned Adults Growing  
Educationally

**SUMMER 2017**

**Classes for  
Seniors 60 and Older**



**REGISTRATION  
begins May 12, 2017  
Classes begin  
June 12**



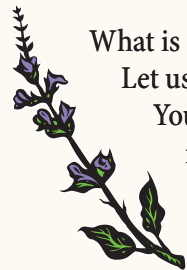
## SAGE registration fee increasing by \$10, effective Fall 2017

How do you put a monetary value on engagement, social interaction, mental stimulation, improved physical health, and an enhanced quality of life? All are priceless benefits of participating in SAGE classes. To cover the cost of doing business, prices across the board at the college are rising for tuition and registration, not just for seniors. For Prince George's Community College to continue to offer you these valuable opportunities, beginning in fall 2017, the SAGE registration fee will be \$85.

We feel it is important to give you the heads up that this small increase is coming. At the same time that we are the bearers of this news, we want to make sure that you are aware how fortunate Maryland seniors are. Maryland is one of only 3 states that waives tuition for seniors, so this registration fee is your total cost! (Lab and supply fees may apply for some classes.)

Your peers in nearby counties attending other community colleges don't have it as good. Some neighboring senior students pay up to a \$49 fee per course. Others pay an \$80 fee covering 3 months of classes. SAGE students will pay \$85 for 4 months of as many non-conflicting classes as you want to attend. If you attend 3 classes (the average number) in a trimester running for 15 weeks, your cost is \$1.88 per class meeting. (A half-gallon of milk is currently about \$1.55.) If you register for 5 classes, which many of you do, it breaks down to \$1.13 per class meeting.

Yes, the registration fee is going up—ten more dollars per trimester, or roughly the cost of 4 gallons of gas, a couple of foot-long Subway® subs, or a meal for 2 at McDonald's®. But, we hope you agree that for the priceless benefits gained, SAGE is still worth it.



What is SAGE worth to you?

Let us know at [sage@pgcc.edu](mailto:sage@pgcc.edu).

Your testimonials could be included in our next class schedule.

The SAGE Team

### Mark Your Calendar!

Registration for *Therapeutic Aquatics\** and *Health and Fitness\** classes began on April 3, 2017.

*\*These classes always begin 2–4 weeks earlier than the rest of the SAGE courses, so registration begins early as well. E-mail the SAGE office at [SAGE@pgcc.edu](mailto:SAGE@pgcc.edu) if you need a class-specific registration form for one of these courses...or register online!*





The Prince George's Senior Provider Network (PGSPN) offers a **FREE**

## **Senior Resource Directory Transportation Resource Guide**

### **Speakers Bureau**

Check out the wide array of community agencies, businesses, and organizations dedicated to improving the care and quality of life

of Prince George's County Seniors.

**[www.pgspn.org](http://www.pgspn.org)**



## *Senior Line Dance Party*

Time to get your groove on at the Annual Senior Line Dance Party!

Enjoy an American Fare breakfast and then on your feet to line dance!

Wednesday, July 19 , 9am-Noon

Location: Martins Crosswinds in Greenbelt

SMARTlink # 1676218

\$30/ Residents; \$39/ Non-residents

Registration begins Monday, May 15 for residents and Monday, May 22 for Non-residents.

For more information, please call M-NCPPC, Special Programs Division at 301-446-3400.



PRINCE GEORGE'S  
COMMUNITY COLLEGE

**Workforce Development  
and Continuing Education**

301 Largo Road  
Largo, MD 20774-2199  
www.pgcc.edu

Nonprofit Org.  
U.S. Postage  
**PAID**  
Permit No. 14  
Upper Marlboro  
Maryland 20774

## Change A Life Donation Week

**Seniors Helping Seniors Grant** funds rely on the generosity of you and your peers. Applicants should have a demonstrated need.

SAGE will officially sponsor our **Change A Life** Week fund-raising effort for the Seniors Helping Seniors Grants during the week of July 17, 2017.

Please donate change in each of your classes to change a life for fellow students who cannot afford to register. During this week, help us remind your teachers to collect and your fellow students to donate.

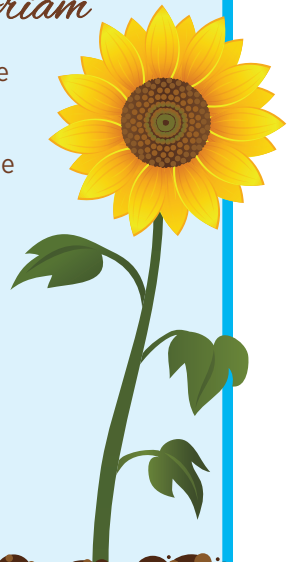
Donations to the Seniors Helping Seniors grant fund are always welcome, no matter what time of year. Checks **must** be made out to Prince George's Community College Foundation, Inc. with "Seniors Helping Seniors" designated in the memo line. You will receive an acknowledgement letter and a year-end tax receipt.

**Please mail your contribution to:**

Attn: Jenny Tringali  
PGCC Seniors Helping Seniors  
Kent Hall, Room 207  
301 Largo Road  
Largo, MD 20774-2199

### *In Memoriam*

If you would like to donate in memory of someone, please include a note with your SHS check and we will include it in our next publication.



*Our heartfelt  
thanks to all who  
have contributed.*